

TEXAS INDUSTRY PROFILE

Local Government

Industry Description

Local government consists of establishments of local government agencies that administer, oversee, and manage public programs and have executive, legislative, or judicial authority over other institutions within a given area. These agencies also set policy, create laws, adjudicate civil and criminal legal cases, provide for public safety and for national defense. Local government establishments typically are engaged in the organization and financing of the production of public goods and services. Local government establishments also engage in a wide range of productive activities covering individual goods and services. "Local Government" is not a NAICS sector but an ownership category produced by the size-class breakdown which covers the ownership category of Local Government regardless of NAICS code or sector. *NAICS 921 (Executive, Legislative, and Other General Government Support) 922 (Justice, Public Order, and Safety Activities) 923 (Administration of Human Resource Programs) 924 (Administration of Environmental Quality Programs) 925 (Administration of Housing Programs, Urban Planning, and Community Development) 926 (Administration of Economic Programs).

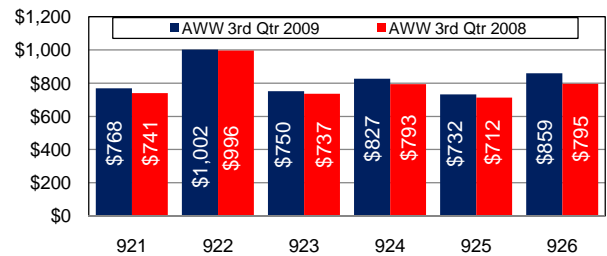
Total Nonagricultural Annual Employment Growth Rate 1999-2009

Data Not Available. This detailed industry not independently published through the CES program.

Size Class Data for Local Government

| Size Class | Units | Employment | % of NAICS |
|-------------------|--------------|------------------|---------------|
| 0-4 employees | 889 | 2,488 | 0.2% |
| 5-9 employees | 451 | 2,910 | 0.2% |
| 10-19 employees | 425 | 5,736 | 0.5% |
| 20-49 employees | 513 | 16,731 | 1.3% |
| 50-99 employees | 395 | 27,676 | 2.2% |
| 100-249 employees | 549 | 87,120 | 7.0% |
| 250-499 employees | 293 | 103,533 | 8.3% |
| 500+ employees | 404 | 1,002,793 | 80.3% |
| Total | 3,919 | 1,248,987 | 100.0% |

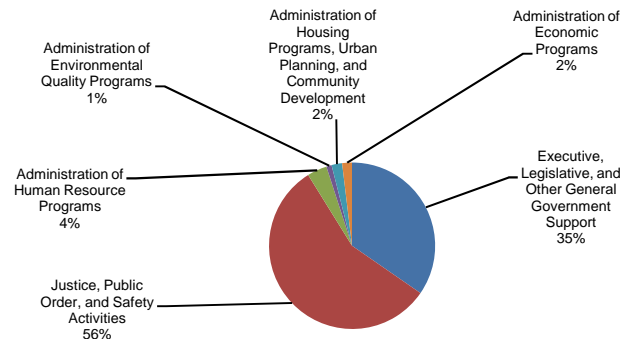
Average Weekly Wage



Total Nonagricultural Employment Levels for Local Government

Data Not Available. This detailed industry not independently published through the CES program.

Component Breakout 3rd Quarter 2009



Percentage of Local Government in TX Nonagricultural Employment

Data Not Available. This detailed industry not independently published through the CES program.

Historical Covered Employment for Local Government 3rd Qtr

| NAICS* | 2009 | 2008 | Numerical | Percent |
|--------|---------|---------|-----------|---------|
| 921 | 82,031 | 79,208 | 2,823 | 3.6% |
| 922 | 130,054 | 122,405 | 7,649 | 6.2% |
| 923 | 8,928 | 8,528 | 400 | 4.7% |
| 924 | 2,318 | 2,409 | -91 | -3.8% |
| 925 | 4,708 | 4,531 | 177 | 3.9% |
| 926 | 4,535 | 4,687 | -152 | -3.2% |