

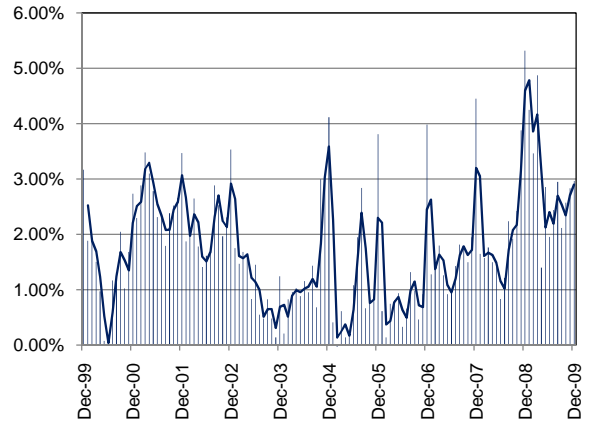
TEXAS INDUSTRY PROFILE

Nursing and Residential Care Facilities
NAICS 623 (Private Industry Only)

Industry Description

Industries in the Nursing and Residential Care Facilities subsector provide residential care combined with either nursing, supervisory, or other types of care as required by the residents. In this subsector, the facilities are a significant part of the production process and the care provided is a mix of health and social services with the health services being largely some level of nursing services. *NAICS 6231 (Nursing Care Facilities) 6232 (Residential Mental Retardation, Mental Health and Substance Abuse Facilities) 6233 (Community Care Facilities for the Elderly) 6239 (Other Residential Care Facilities).

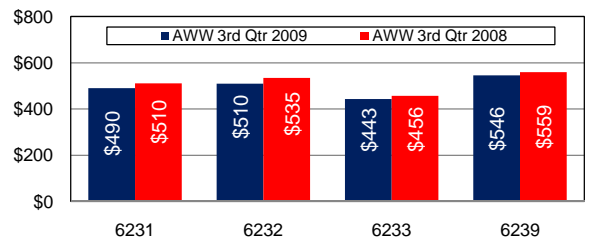
Total Nonagricultural Annual Employment Growth Rate 1999-2009



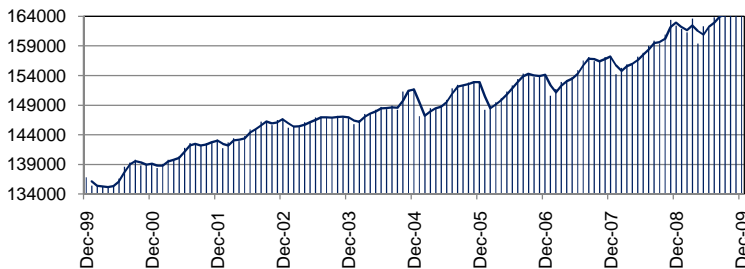
Size Class Data for Nursing and Residential Care Facilities

Size Class	Units	Employment	% of NAICS
0-4 employees	249	685	0.4%
5-9 employees	190	1262	0.8%
10-19 employees	223	3123	1.9%
20-49 employees	387	13019	7.9%
50-99 employees	527	38256	23.2%
100-249 employees	416	57160	34.6%
250-499 employees	67	23061	14.0%
500+ employees	28	28535	17.3%
Total	2,087	165,101	100.0%

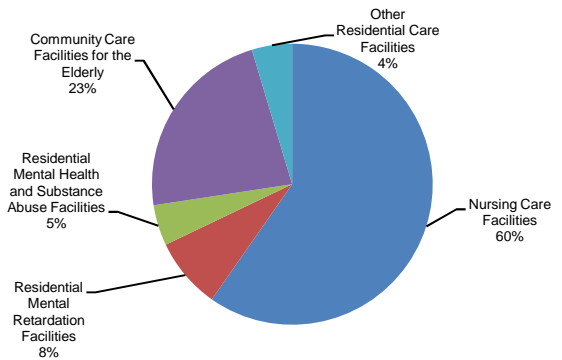
Average Weekly Wage



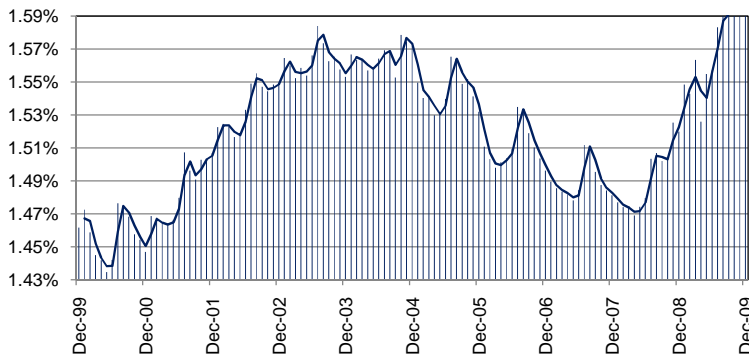
Total Nonagricultural Employment Levels for Nursing and Residential Care Facilities



Component Breakout 3rd Quarter 2009



Percentage of Nursing and Residential Care Facilities in TX Nonagricultural Employment



Historical Covered Employment for Nursing and Residential Care Facilities 3rd Qtr

NAICS*	2009	2008	Numerical	Percent
6223	13537	12,621	916	7.3%
6231	98533	96,458	2,075	2.2%
6232	21305	20,170	1,135	5.6%
6233	37782	35,328	2,454	6.9%