

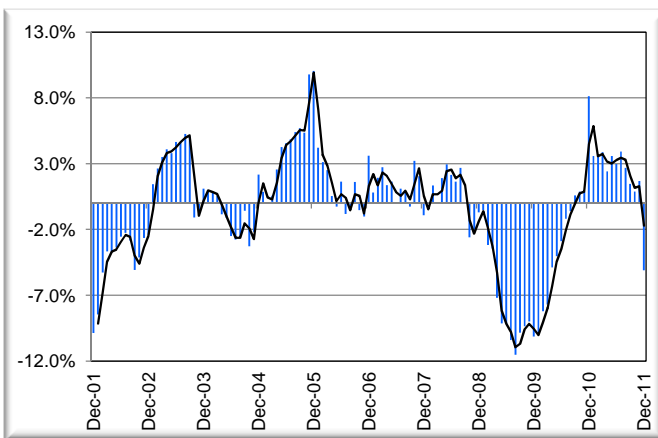
TEXAS INDUSTRY PROFILE

Couriers and Messengers
NAICS 492 (Private Industry Only)

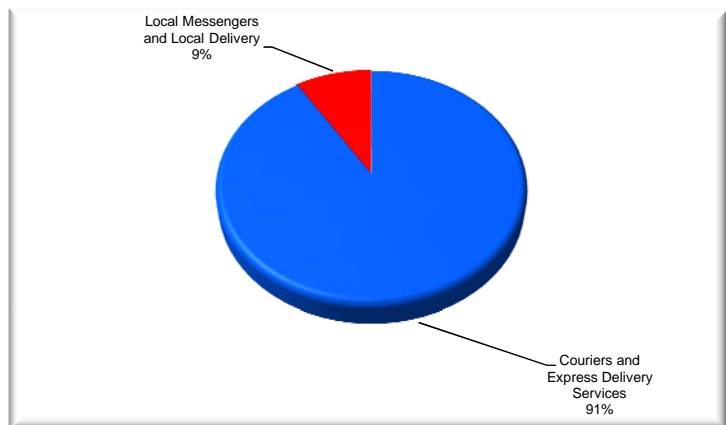
Industry Description

Industries in the Couriers and Messengers subsector provide inter-city and/or local delivery of parcels. These articles can be described as those that may be handled by one person without using special equipment. This allows the collection, pick-up, and delivery operations to be done with limited labor costs and minimal equipment. The restriction to small parcels partly distinguishes these establishments from those in the transportation industries. The complete network of courier services establishments also distinguishes these transportation services from local messenger and delivery establishments in this subsector. This includes the establishments that perform inter-city transportation as well as establishments that perform local pick-up and delivery. *NAICS 4921 (Couriers) 4922 (Local Messengers and Local Delivery).

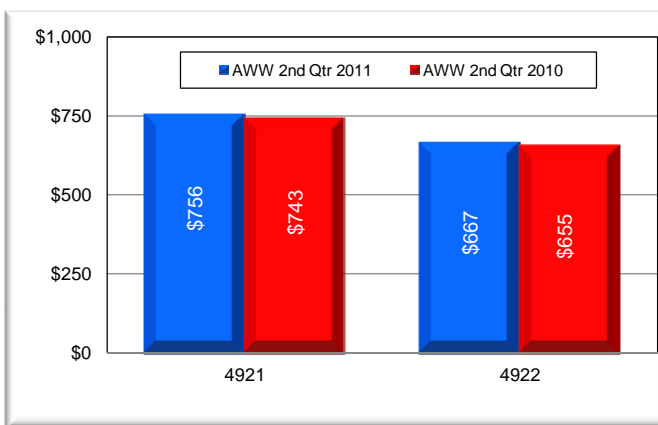
Total Nonagricultural Annual Employment Growth Rate 2001-2011



Component Breakout 2nd Qtr 2011



Average Weekly Wage



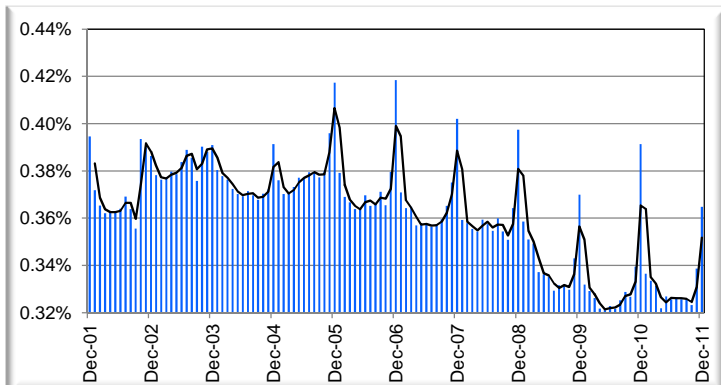
Size Class Data for Couriers and Messengers

Size Class	Units	Employment	% of NAICS
0-4 employees	717	1,163	25.6%
5-9 employees	191	1,227	27.0%
10-19 employees	94	1,211	26.6%
20-49 employees	34	950	20.9%
50-99 employees	N/A	N/A	N/A
100-249 employees	N/A	N/A	N/A
250-499 employees	N/A	N/A	N/A
500+ employees	N/A	N/A	N/A
Total	1,036	4,551	100.0%

Historical Covered Employment for Couriers and Messengers

NAICS*	2nd Qtr 2011		2nd Qtr 2010	
	Numerical	Percent	Numerical	Percent
4921	31,194	1.8%	30,639	1.8%
4922	3,033	9.3%	2,774	9.3%

Percentage of Couriers and Messengers in TX Nonagricultural Employment



Total Nonagricultural Employment Levels for Couriers and Messengers

