

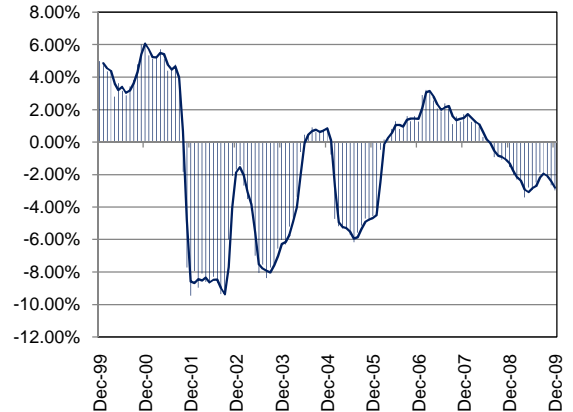
TEXAS INDUSTRY PROFILE

Air Transportation
NAICS 481 (Private Industry Only)

Industry Description

Industries in the Air Transportation subsector provide air transportation of passengers and/or cargo using aircraft, such as airplanes and helicopters. The subsector distinguishes scheduled from nonscheduled air transportation. Scheduled air carriers fly regular routes on regular schedules and operate even if flights are only partially full. Nonscheduled carriers often operate during non-peak time slots at busy airports. These establishments have more flexibility with respect to choice of airport, hours of operation, and load factors. Nonscheduled carriers provide chartered air transportation of passengers, cargo, or specialty flying services. Specialty flying services establishments use general purpose aircraft to provide a variety of specialized flying services. *NAICS 4811 (Scheduled Air Transportation) 4812 (Non-scheduled Air Transportation).

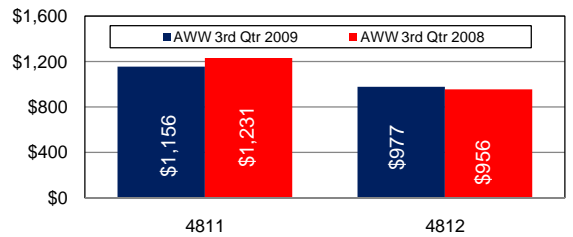
Total Nonagricultural Annual Employment Growth Rate 1999-2009



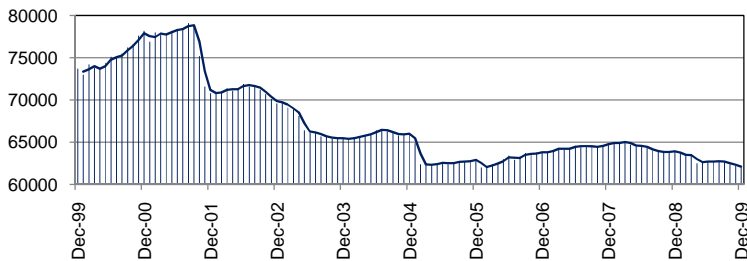
Size Class Data for Air Transportation

Size Class	Units	Employment	% of NAICS
0-4 employees	220	310	13.0%
5-9 employees	53	366	15.4%
10-19 employees	37	490	20.6%
20-49 employees	41	1,210	50.9%
50-99 employees	N/A	N/A	N/A
100-249 employees	N/A	N/A	N/A
250-499 employees	N/A	N/A	N/A
500+ employees	N/A	N/A	N/A
Total	351	2,376	100.0%

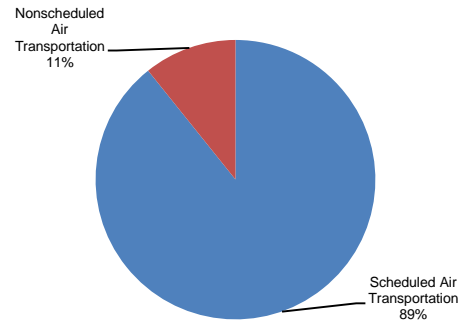
Average Weekly Wage



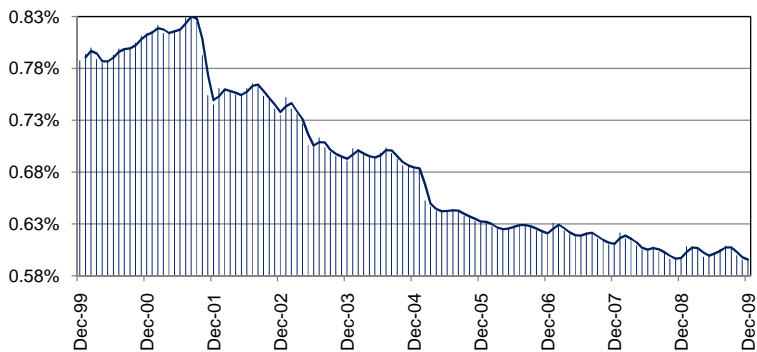
Total Nonagricultural Employment Levels for Air Transportation



Component Breakout 3rd Quarter 2009



Percentage of Air Transportation in TX Nonagricultural Employment



Historical Covered Employment for Air Transportation 3rd Qtr

NAICS*	2009	2008	Numerical	Percent
4811	54,317	59,070	-4,753	-8.0%
4812	6,549	7,200	-651	-9.0%