

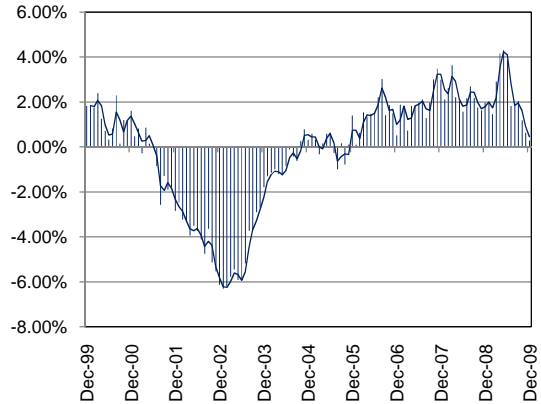
# TEXAS INDUSTRY PROFILE

Food and Beverage Stores  
NAICS 445 (Private Industry Only)

## Industry Description

Industries in the Food and Beverage Stores subsector usually retail food and beverage merchandise from fixed point-of-sale locations. Establishments in this subsector have special equipment (e.g., freezers, refrigerated display cases, refrigerators) for displaying food and beverage goods. They have staff trained in the processing of food products to guarantee the proper storage and sanitary conditions required by regulatory authority. \*NAICS 4451 (Grocery Stores) 4452 (Specialty Food Stores) 4453 (Beer, Wine, and Liquor Stores).

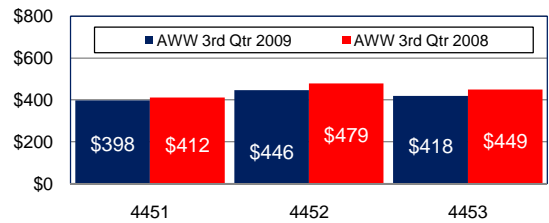
## Total Nonagricultural Annual Employment Growth Rate 1999-2009



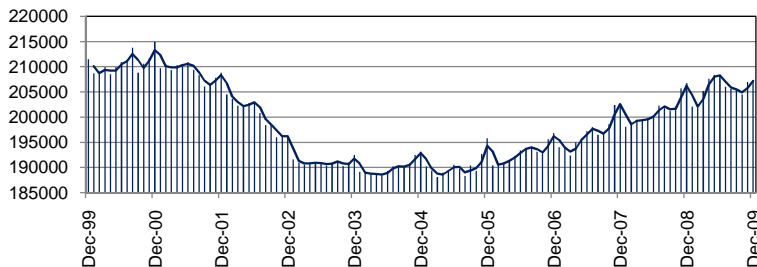
## Size Class Data for Food and Beverage Stores

Size Class	Units	Employment	% of NAICS
0-4 employees	4082	8593	4.2%
5-9 employees	1102	6978	3.4%
10-19 employees	595	8033	3.9%
20-49 employees	368	10953	5.4%
50-99 employees	105	7164	3.5%
100-249 employees	55	7866	3.9%
250-499 employees	22	7676	3.8%
500+ employees	25	146792	71.9%
<b>Total</b>	<b>6,354</b>	<b>204,055</b>	<b>100.0%</b>

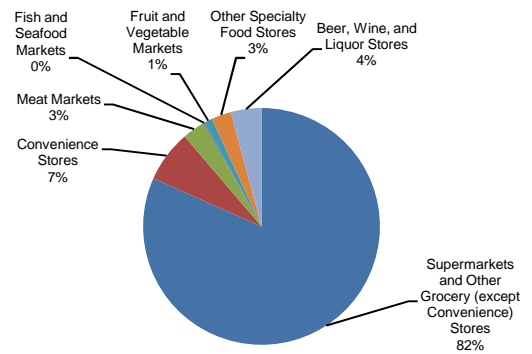
## Average Weekly Wage



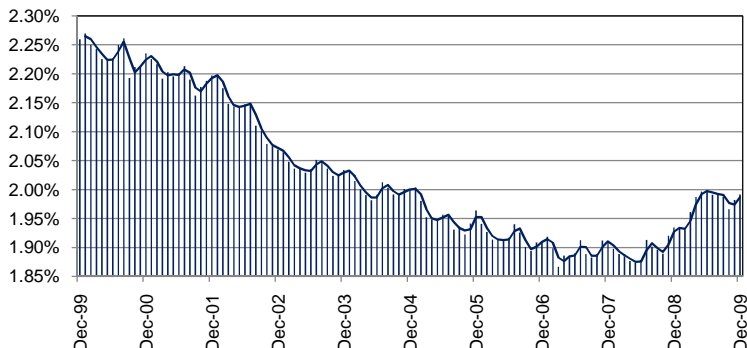
## Total Nonagricultural Employment Levels for Food and Beverage Stores



## Component Breakout 3rd Quarter 2009



## Percentage of Food and Beverage Stores in TX Nonagricultural Employment



## Historical Covered Employment for Food and Beverage Stores 3rd Qtr

NAICS*	2009	2008	Numerical	Percent
4451	181131	181290	-159	-0.1%
4452	14439	13982	457	3.3%
4453	8567	8284	283	3.4%