

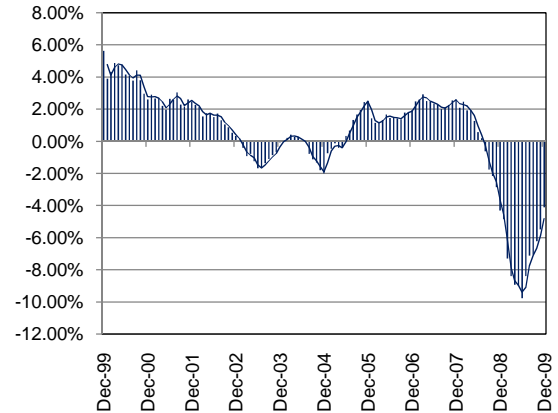
TEXAS INDUSTRY PROFILE

Motor Vehicle and Parts Dealers
NAICS 441 (Private Industry Only)

Industry Description

Industries in the Motor Vehicle and Parts Dealers subsector retail motor vehicle and parts merchandise from fixed point-of-sale locations. Establishments in this subsector typically operate from a showroom and/or an open lot where the vehicles are on display. The display of vehicles and the related parts require little by way of display equipment. The personnel generally include both the sales and sales support staff familiar with the requirements for registering and financing a vehicle as well as a staff of parts experts and mechanics trained to provide repair and maintenance services for the vehicles. Specific industries have been included in this subsector to identify the type of vehicle being retailed. *NAICS 4411(Automobile Dealers) 4412 (Other Motor Vehicle Dealers) 4413 (Automotive Parts, Accessories, and Tire Stores).

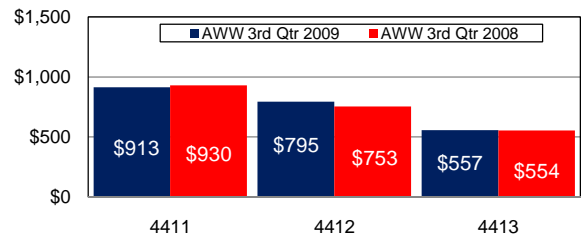
Total Nonagricultural Annual Employment Growth Rate 1999-2009



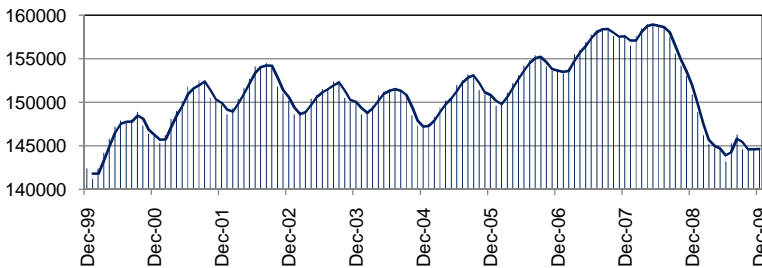
Size Class Data for Motor Vehicle and Parts Dealers

Size Class	Units	Employment	% of NAICS
0-4 employees	3261	6599	4.7%
5-9 employees	1218	8017	5.7%
10-19 employees	737	9925	7.0%
20-49 employees	660	21033	14.9%
50-99 employees	351	24589	17.4%
100-249 employees	242	33477	23.6%
250-499 employees	23	7412	5.2%
500+ employees	19	30520	21.6%
Total	6,511	141,572	100.0%

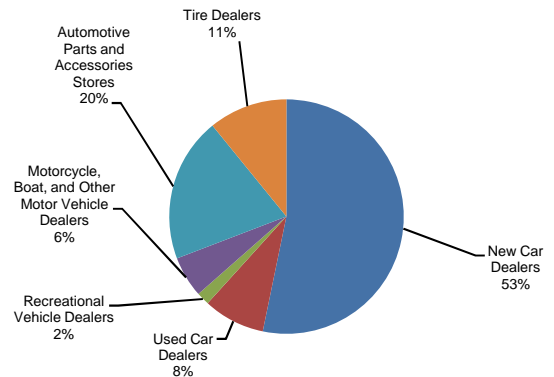
Average Weekly Wage



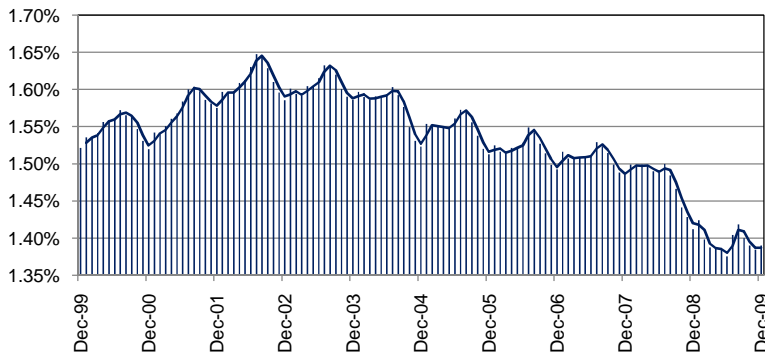
Total Nonagricultural Employment Levels for Motor Vehicle and Parts Dealers



Component Breakout 3rd Quarter 2009



Percentage of Motor Vehicle and Parts Dealers in TX Nonagricultural Employment



Historical Covered Employment for Mining Motor Vehicle and Parts Dealers 3rd Qtr

NAICS*	2009	2008	Numerical	Percent
4411	87428	101308	-13880	-13.7%
4412	10524	12127	-1603	-13.2%
4413	43669	44083	-414	-0.9%