

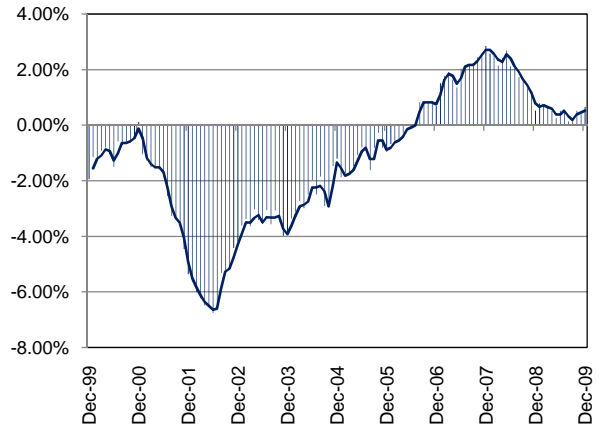
TEXAS INDUSTRY PROFILE

Chemical Manufacturing
NAICS 325 (Private Industry Only)

Industry Description

The Chemical Manufacturing subsector is based on the transformation of organic and inorganic raw materials by a chemical process and the formulation of products. This subsector distinguishes the production of basic chemicals that comprise the first industry group from the production of intermediate and end products produced by further processing of basic chemicals that make up the remaining industry groups. This subsector does not include all industries transforming raw materials by a chemical process. *NAICS 3251 (Basic Chemical Mfg) 3252 (Resin, Synthetic Rubber and Artificial Synthetic Fibers and Filaments Mfg) 3253 (Pesticide, Fertilizer, and other Agricultural Chemical Mfg) 3254 (Pharmaceutical and Medicine Mfg) 3255 (Paint, Coating and Adhesive Mfg) 3256 (Soap, Cleaning Compound, and Toilet Preparation Mfg) 3259 (Other Chemical Product and Preparation Mfg).

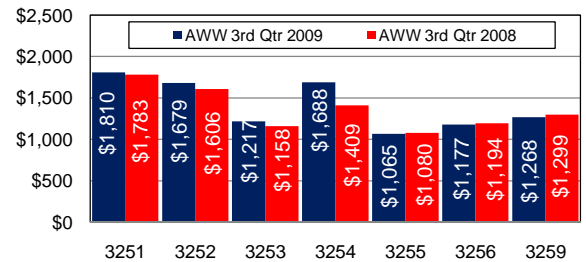
Total Nonagricultural Annual Employment Growth Rate 1999-2009



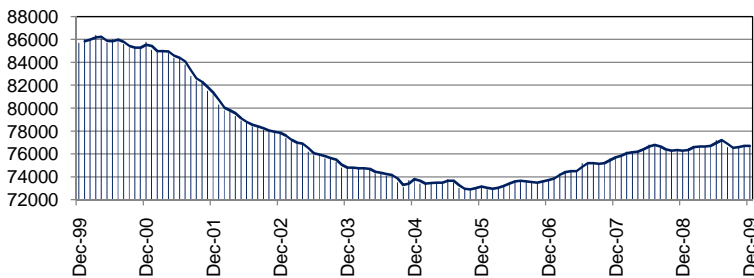
Size Class Data for Chemical Manufacturing Extraction

Size Class	Units	Employment	% of NAICS
0-4 employees	372	714	1.0%
5-9 employees	150	977	1.4%
10-19 employees	144	1979	2.7%
20-49 employees	155	5041	7.0%
50-99 employees	82	5658	7.8%
100-249 employees	75	11363	15.7%
250-499 employees	32	11074	15.3%
500+ employees	32	35426	49.0%
Total	1042	72232	100.0%

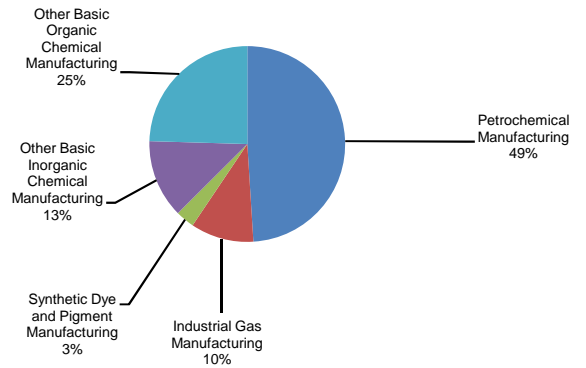
Average Weekly Wage



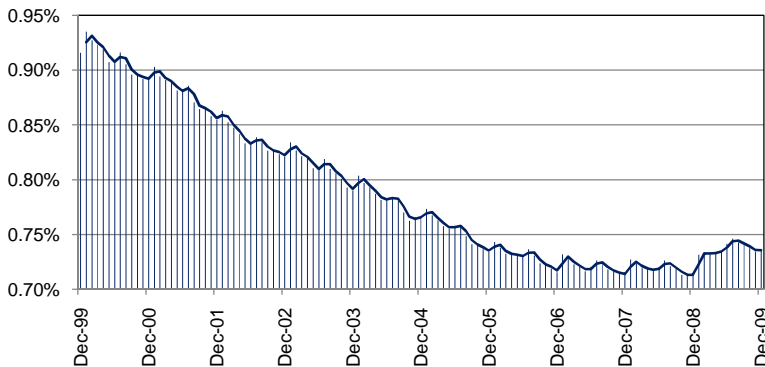
Total Nonagricultural Employment Levels for Chemical Manufacturing



Component Breakout 3rd Quarter 2009



Percentage of Chemical Manufacturing in TX Nonagricultural Employment



Historical Covered Employment for Chemical Manufacturing 3rd Qtr

NAICS*	2009	2008	Numerical	Percent
3251	31908	33378	-1,470	-4.4%
3252	9460	10650	-1,190	-11.2%
3253	3026	2996	30	1.0%
3254	9865	10045	-180	-1.8%
3255	5219	5571	-352	-6.3%
3256	5120	5126	-6	-0.1%
3259	7630	8362	-732	-8.8%