

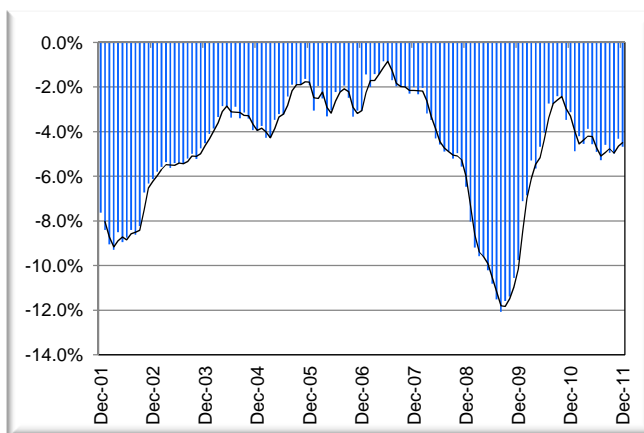
TEXAS INDUSTRY PROFILE

Printing and Related Support Activities NAICS 323 (Private Industry Only)

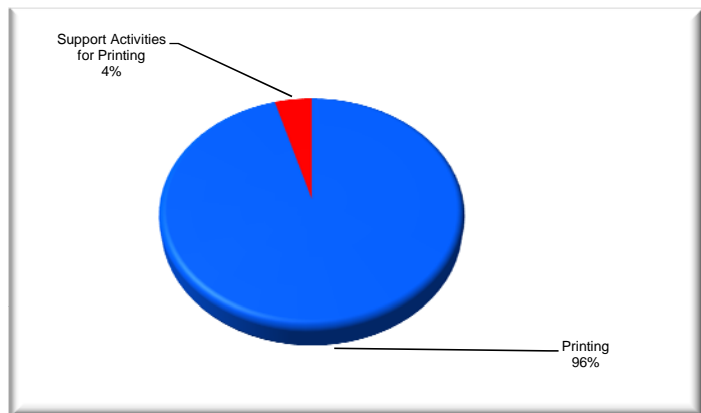
Industry Description

Industries in the Printing and Related Support Activities subsector print products, such as newspapers, books, periodicals, business forms, greeting cards, and other materials, and perform support activities, such as bookbinding, platemaking services, and data imaging. The support activities included here are an integral part of the printing industry, and a product (a printing plate, a bound book, or a computer disk or file) that is an integral part of the printing industry is almost always provided by these operations. *NAICS 3231 (Printing and Related Support Manufacturing).

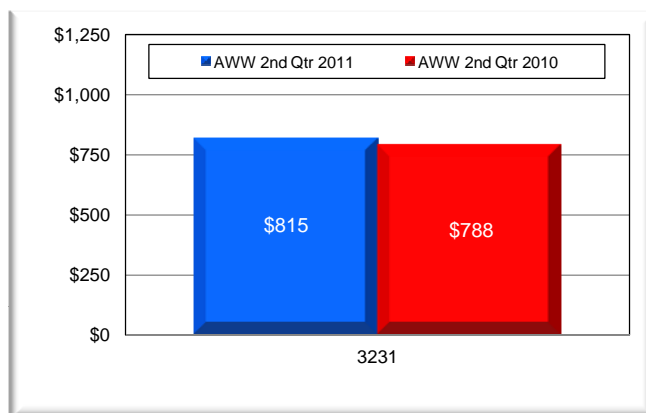
Total Nonagricultural Annual Employment Growth Rate 2001-2011



Component Breakout 2nd Quarter 2011



Average Weekly Wage



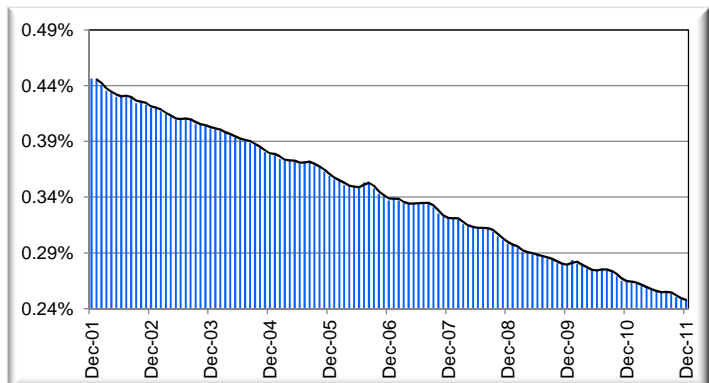
Size Class Data for Printing and Related Support Activities

Size Class	Units	Employment	% of NAICS
0-4 employees	1,038	2,041	8.5%
5-9 employees	431	2,816	11.8%
10-19 employees	255	3,407	14.2%
20-49 employees	167	5,124	21.4%
50-99 employees	65	4,381	18.3%
100-249 employees	38	6,162	25.7%
250-499 employees	N/A	N/A	N/A
500+ employees	N/A	N/A	N/A
Total	1,994	23,931	100.0%

Historical Covered Employment for Printing and Related Support Activities

NAICS*	2nd Qtr		Numerical	Percent
	2011	2010		
3231	27,351	28,524	-1,173	-4.1%

Percentage of Printing and Related Support Activities in TX Nonagricultural Employment



Total Nonagricultural Employment Levels for Printing and Related Support Activities

