

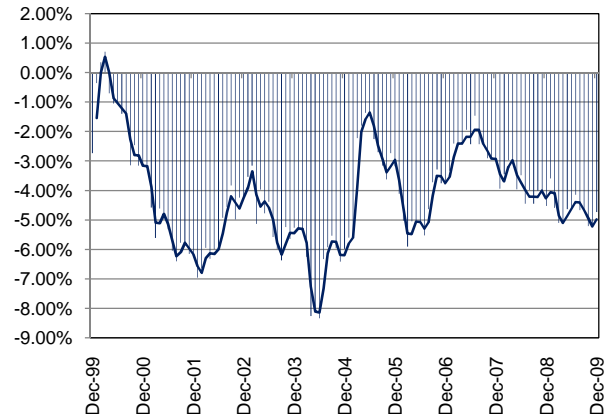
TEXAS INDUSTRY PROFILE

Paper Manufacturing
NAICS 322 (Private Industry Only)

Industry Description

Industries in the Paper Manufacturing subsector make pulp, paper, or converted paper products. The manufacturing of these products is grouped together because they constitute a series of vertically connected processes. More than one is often carried out in a single establishment. There are essentially three activities. The manufacturing of pulp involves separating the cellulose fibers from other impurities in wood or used paper. The manufacturing of paper involves matting these fibers into a sheet. Converted paper products are made from paper and other materials by various cutting and shaping techniques and includes coating and laminating activities. *NAICS 3221 (Pulp, Paper, and Paperboard Mills) and 3222 (Converted Paper Product Mfg).

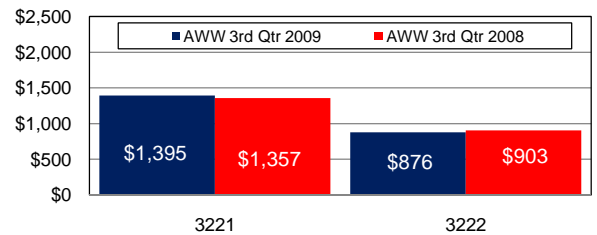
Total Nonagricultural Annual Employment Growth Rate 1999-2009



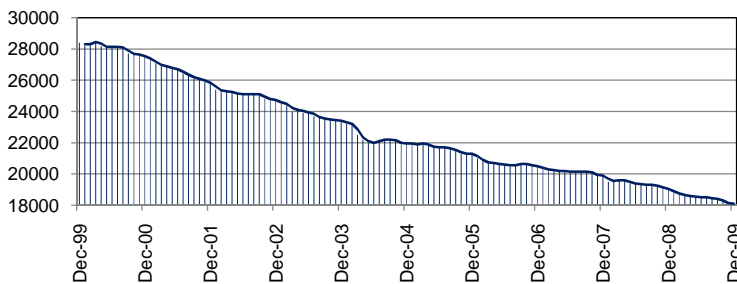
Size Class Data for Paper Manufacturing

Size Class	Units	Employment	% of NAICS
0-4 employees	58	133	1.5%
5-9 employees	31	213	2.5%
10-19 employees	30	398	4.6%
20-49 employees	56	1782	20.7%
50-99 employees	38	2658	30.9%
100-249 employees	23	3410	39.7%
250-499 employees	N/A	N/A	N/A
500+ employees	N/A	N/A	N/A
Total	236	8594	100.0%

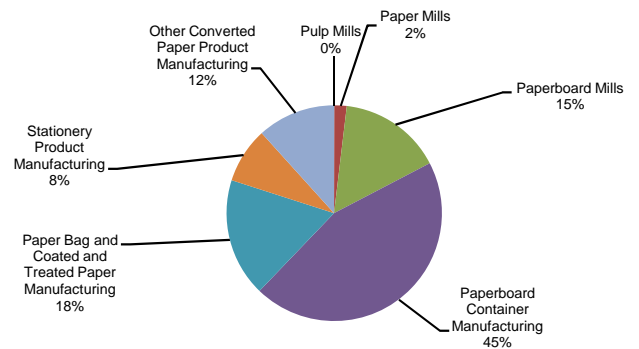
Average Weekly Wage



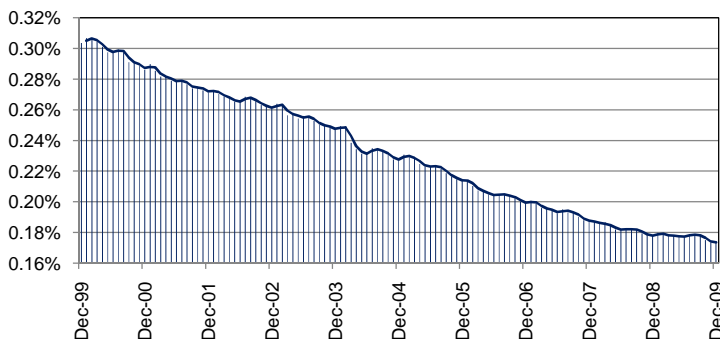
Total Nonagricultural Employment Levels for Paper Manufacturing



Component Breakout 3rd Quarter 2009



Percentage of Paper Manufacturing in TX Nonagricultural Employment



Historical Covered Employment for Paper Manufacturing 3rd Qtr

NAICS*	2009	2008	Numerical	Percent
3221	3091	3260	-169	-5.2%
3222	14728	16066	-1,338	-8.3%