

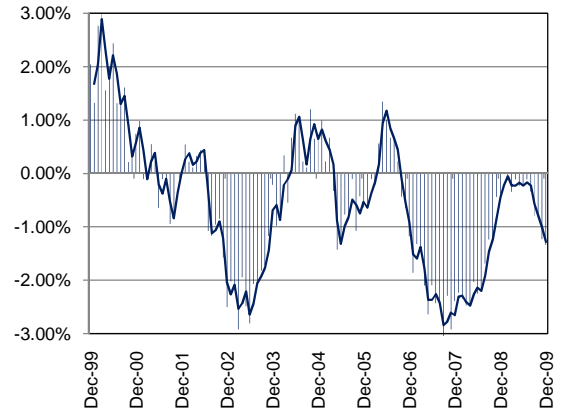
# TEXAS INDUSTRY PROFILE

Food Manufacturing  
NAICS 311 (Private Industry Only)

## Industry Description

Industries in the Food Manufacturing subsector transform livestock and agricultural products into products for intermediate or final consumption. The industry groups are distinguished by the raw materials (generally of animal or vegetable origin) processed into food products. The food products manufactured in these establishments are typically sold to wholesalers or retailers for distribution to consumers, but establishments primarily engaged in retailing bakery and candy products made on the premises not for immediate consumption are included. \*NAICS 3111 (Animal Food Mfg) 3112 (Grain and Oilseed Milling) 3113 (Sugar and Confectionary Product Mfg) 3114 (Fruit and Vegetable Preserving and Specialty Food Mfg) 3115 (Dairy Product Mfg) 3116 (Animal Slaughtering and Processing) 3117 (Seafood Product Preparation and Packaging) 3118 (Bakeries and Tortilla Mfg) 3119 (Other Food Mfg).

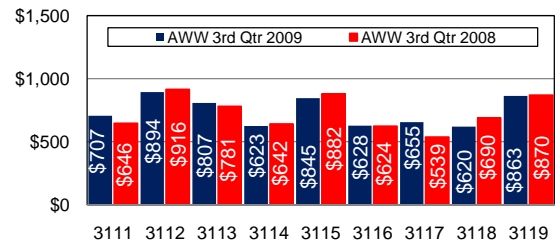
## Total Nonagricultural Annual Employment Growth Rate 1999-2009



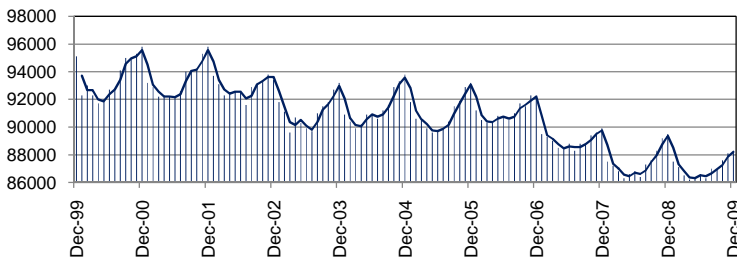
## Size Class Data for Food Manufacturing

Size Class	Units	Employment	% of NAICS
0-4 employees	618	1254	1.4%
5-9 employees	266	1743	2.0%
10-19 employees	198	2707	3.1%
20-49 employees	199	6199	7.1%
50-99 employees	98	6805	7.8%
100-249 employees	87	13535	15.4%
250-499 employees	35	12170	13.9%
500+ employees	27	43244	49.3%
<b>Total</b>	<b>1528</b>	<b>87657</b>	<b>100.0%</b>

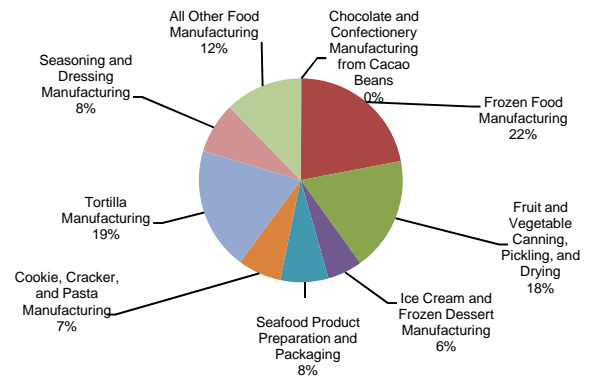
## Average Weekly Wage



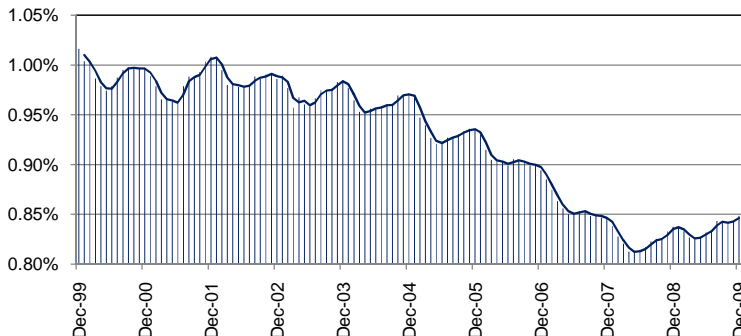
## Total Nonagricultural Employment Levels for Food Manufacturing



## Component Breakout 3rd Quarter 2009



## Percentage of Food Manufacturing in TX Nonagricultural Employment



## Historical Covered Employment for Food Manufacturing 3rd Qtr

NAICS*	2009	2008	Numerical	Percent
3111	2957	2534	423	16.7%
3112	3002	2935	67	2.3%
3113	2880	2905	-25	-0.9%
3114	7065	7122	-57	-0.8%
3115	6114	6274	-160	-2.6%
3116	39228	39358	-130	-0.3%
3117	1358	1309	49	3.7%
3118	16855	16325	530	3.2%
3119	8533	8576	-43	-0.5%